

LABUAN BAJO

*The Gate of The World Ecotourism
in East Nusa Tenggara*

LABUAN BAJO

DESTINATION PROFILE

Location

Province : East Nusa Tenggara
Regency : Manggarai Barat

Area

Coordinative : 1000 Ha
Otoritative : 1000 Ha

Accessibility

El Tari Airport
Komodo Airport

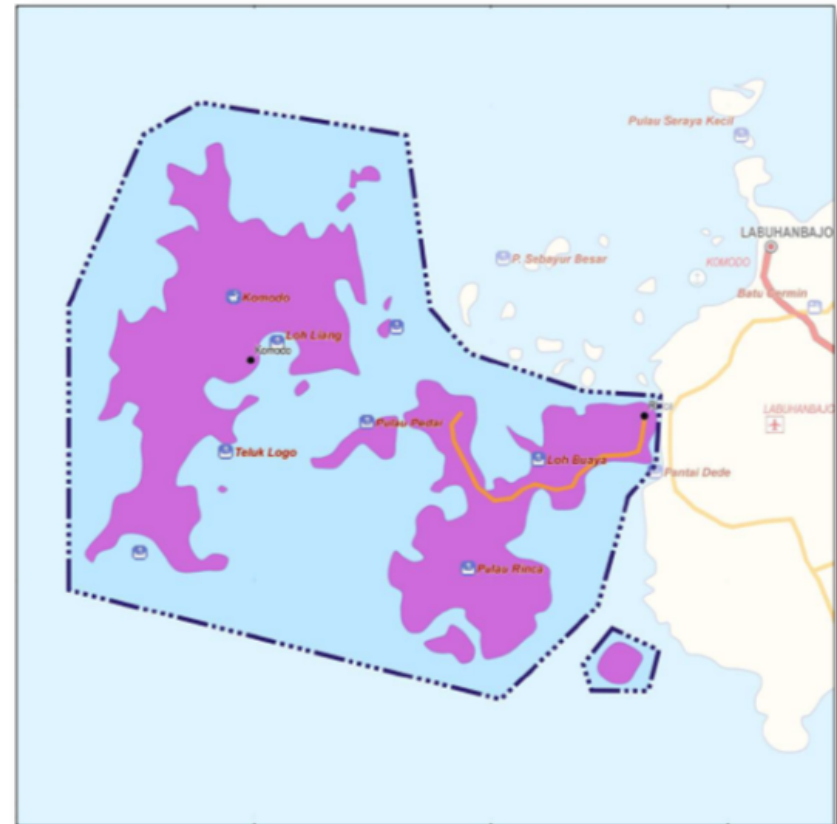
Investment Value

Public Investment	Private Investment
USD 590 Million	USD 590 million

Highlights

- Labuan Bajo appointed as World Heritage Site and Man and Biosphere Reserve by UNESCO in 1986.
- Labuan Bajo has endangered and most unique species in the world, Komodo (The Giant Lizard), the heaviest and the biggest lizard in the world.

1 USD = 13.600 IDR



LABUAN BAJO

ATTRACTION



Snorkeling, Diving, visit uninhabited island, sunset scenery, Silhouette of small islands towards the port form a dramatic effect to the scenery.

Semana Santa Lantaruka, Kelimutu Festival, Nationality Parade, Tour de Flores, Shark & Manta Sanctuary Photography Competition, Penti Wae Rebo Festival



Night Culinary Center in Kampung Ujung provide many kind of seafood dishes. Tourist can enjoy eating seafood barbeque along shoreline

LABUAN BAJO



DESTINATION PORTFOLIO COMPARISON

No	Dimension	Indonesia	Ekuador	Thailand
1	Destination	Komodo National Park	Galapagos National Park	Khao Yai National Park
2	Tag line	“The Gate Point Of World Ecotourism In East Nusa Tenggara”	“A National Park and World Heritage Site”	“A World Natural Heritage Site” by the UNESCO
3	Tourist Arrival (2013)	54.147	149.997	828.525 (april)
4	Highlight Attractions	Komodo, 32 mamalia species, 128 bird species, and 37 reptile species	Endangered species such as land iguana, sea iguana, giant turtle and many bird species	Elephant, Bear, Deer, Beaver, Owa, Monkey, Birds
5	Amenity	Hotel, Homestay, Parking Area, Park, Signage, TIC, Retail, Pedestria, Souvenir	Hotel, TIC, Pedestrian, Airport, Cruise port, Tourist bus, Local Culinary, Shopping Center, Signage	Hotel, Restaurant, Shopping Center, Tour Guide
6	Event	Sail Komodo, Tour de Flores	-	Elephant Ride Day Trip
7	Management	Labuan Bajo Tourism Authority Board	Ecuador National Park	Department of National Parks, Wildlife and Plant Conservation

LABUAN BAJO

GOVERNMENT'S COMMITMENTS

- Development of national roads
 - ✓ Improvement in Labuan Bajo's North and South Outer Ring Road
- Development of airport
 - ✓ Escalation of Komodo Airport to become International Airport
- Development of seaport
 - ✓ Establishment of Marina Tourist Port Area
 - ✓ Establish cruise links domestically and internationally
- Others :
 - ❖ Create Tourism Research Center